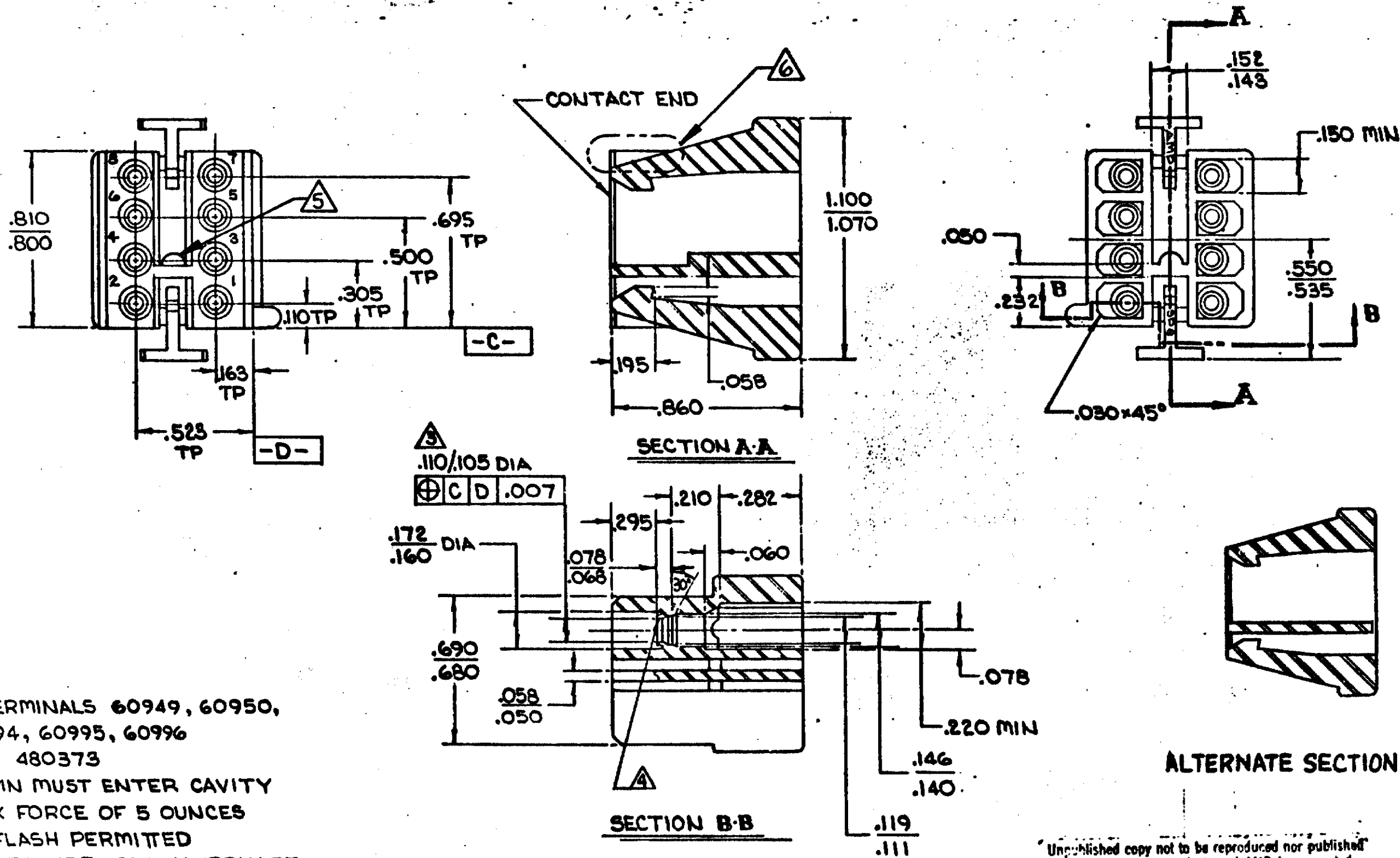


CTAB-14-59-AD



NOTES:

1. ACCEPTS TERMINALS 60949, 60950, 60951, 60994, 60995, 60996

2. MATES WITH 480373

△ A .105 DIA PIN MUST ENTER CAVITY WITH A MAX FORCE OF 5 OUNCES

△ .005 MAX FLASH PERMITTED

△ OPTIONAL FEATURE - SEE ALTERNATE SECTION A-A.

△ OPTIONAL CONFIGURATION - SEE ALTERNATE SECTION A-A.

Unpublished copy not to be reproduced nor published without written permission of AMP Incorporated.

REV	DESCRIPTION	DATE	BY	CHK
G	REV PER CM-1015	PKC	TB	10-14-81
F	RESTORATION	K3	ST	5-6-85
E	REV. M-7432	ST	ST	11-9-82
D	REV. M-7432	ST	ST	1-15-82
C	REV. M-7432	ST	ST	1-15-82
B	REV. M-7432	ST	ST	1-15-82
A	REV. M-7432	ST	ST	1-15-82

REV	MATERIAL	COLOR
480374-0	NYLON	NATURAL
480374-1	NYLON	BLACK
	MATERIAL	COLOR

NUMBER	REQUIRED PER ASSEMBLY	DWG SIZE	NUMBER	NAME	REMARKS	ITEM NO
		© 1966 BY AMP INCORPORATED. ALL RIGHTS RESERVED. AMP PRODUCTS COVERED BY PATENTS AND/OR PATENTS PENDING.		CUSTOMER COPY REFERENCE ONLY		
		DR	6-6-72	MATERIAL AND FINISH		AMP INCORPORATED HARRISBURG, PENNA.
		CHK	6-12-72	SEE CHART		
		DE	6-12-72	WIRE - RANGE - INSULATION		CLASS .026 SOCKET HOUSING
		APP		TOLERANCE EXCEPT AS NOTED ±.015 ± 1° 0'		
				SCALE 2X1		TYPE #
				L/C CM B NO 480374		
				NAME		REV. G

B CIRCUIT DUAL-IN-LINE PLUG